

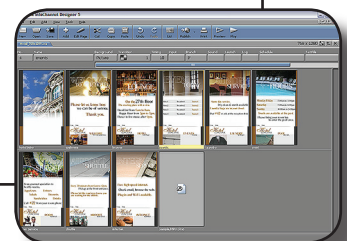
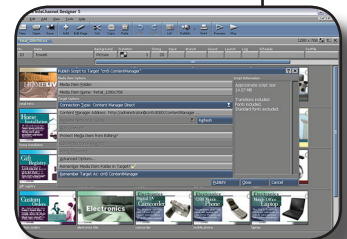
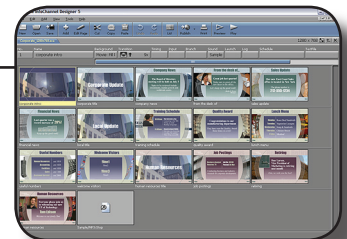
InfoChannel Designer is the fastest, most cost-effective solution for creating truly dynamic content for digital signage. You can author professional media in an attention-grabbing environment for virtually any type of display by incorporating your existing media files into a Scala script.

InfoChannel Designer gives you more creative control of your content with flexibility and real-time edits not offered

by video production. While your InfoChannel network does not require that your content come from InfoChannel Designer, it is the best way to create rich, professional content that can be changed quickly and easily without sacrificing any attention-grabbing appeal. When complete, content is then published to InfoChannel Content Manager where it is scheduled and distributed to InfoChannel Players.

## Key Features

- Create truly dynamic content for InfoChannel Networks
- Easy to use interface with context sensitive menus
- Any content element can be "global" (survives page changes) - even with opacity
- Content elements (including videos) can play over background movies
- Design in portrait-mode and auto rotate on playback
- Quality of TV playback with TV Tuner EX significantly improved
- Save within Design menu
- Publish to HTML or video
- Supports 4:3 and 16:9 content creation
- Real-time image processing and rendering
- Template creation for use with Template Composer EX Module



## Media Support

**Graphics:** BMP, GIF, JPEG, PNG, WMF, etc.

**Animation:** SWF, AnimGIF

**Sound:** WAV, MP3

**Video:** SW MPEG 1 & 2, AVI, QT3, WMV

**Fonts:** OpenType, TrueType<sup>®</sup>

## InfoChannel<sup>®</sup> Designer Modules

### Included Modules

Design Module  
Playback Module  
Template Design Module

### Optional Modules

TV Tuner EX Module  
CORIOgen EX Module  
Weather EX Module  
Video Control EX Module  
MyHD EX Module  
Widescreen Banner EX Module  
NewSight 3D EX Module

## System Requirements

	<b>Low-end Configuration for InfoChannel Player &amp; InfoChannel Designer</b>	<b>Mid-range Configuration for InfoChannel Player &amp; InfoChannel Designer</b>	<b>High-end Configuration for InfoChannel Player &amp; InfoChannel Designer</b>
<b>Display Resolutions up to a maximum of</b>	1024x768x32bpp	1280x768x32bpp	1920x1080x32bpp
<b>Recommended minimum storage</b>	40GB/2MB-Cache, 5400RPM ATA-100 or SATA-150 or better	80GB/8MB-Cache, 7200RPM ATA-100 or SATA-150 or better	RAID-1, 80GB/8MB-Cache, 7200RPM ATA-100 or SATA- 150 or better
<b>Recommended Operating Systems</b>	Windows XP Professional SP2 (32 bit) or for larger networks contact Scala for an XP Embedded HD image (lower cost & preferred)		
<b>Minimum Processor Speed &amp; Type</b>	Intel P4-based Celeron-D- 300-series CPU's at 2.66 GHz+. AMD Sempron, 3100+	Intel P4-500/600-series, 2.4 GHz+/FSB 800MHz+ or better. AMD Athlon64, 3200+	Intel P4-600's CPU or better. AMD Athlon64-X2, 3800+
<b>Minimum RAM Size</b>	256MB of DDR-SDRAM	256MB of DDR-SDRAM	512MB of DDR-SDRAM
<b>Graphics sub-system</b>	An integrated graphics processor such as: ATi RADEON Xpress 200G, or nVidia Geforce 6100 IGP	A discrete graphics processor on an AGPx8 or PCIeX16 card such as: ATi RADEON x600 or nVidia Geforce 6600 or better	A discrete graphics processor on an AGPx8 or PCIeX16 card such as: ATi RADEON x1300 or nVidia Geforce 7600 or better